

**RESOLUTION NO. 12-76**

BE IT RESOLVED BY THE BOARD OF CITY COMMISSIONERS OF THE CITY OF WILLISTON:

WHEREAS, the City of Williston, Williams County, North Dakota, is a municipal corporation, organized and existing under the laws of the State of North Dakota; and

WHEREAS, there is contiguous and adjacent to the City of Williston a tract or parcel of land hereinafter specifically described, containing approximately 18.35 acres, more or less, which tract or parcel of land is not presently a part of the City of Williston

NOW, THEREFORE, BE IT RESOLVED, by the Board of City Commissioners of the City of Williston, North Dakota, that the boundaries of the City of Williston be, and they are hereby extended to as to include and incorporate within the corporate limits of the City of Williston, Williams County, North Dakota, the following described land, to-wit:

See Attached Map and Description

BE IT FURTHER RESOLVED, by the Board of City Commissioners of the City of Williston, North Dakota, that this Resolution be published in the official newspaper for the City of Williston once each week for two successive weeks, that notice of the Resolution be mailed to the owner of each parcel of real property within the area to be annexed at the person's last known mailing address , and a hearing be held on July 10, 2012 at 6:00 p.m. in the City Commission Room, City Hall, Williston, North Dakota. The owners of any real property within the territory proposed to be annexed, within 30 days of the first publication of such resolution, may file written protests with the City Auditor protesting against the proposed annexation.

Commissioner Bogar moved the adoption of the foregoing resolution. The motion was seconded by Commissioner Cymbaluk. On roll call vote of the Commissioners, the following Commissioners voted "AYE": Bekkedahl, Klug, Cymbaluk, Bogar & Koeser, and the following Commissioners voted "NAY": None. Absent and not voting: None.

WHEREUPON the motion was passed and the Resolution declared adopted this 24<sup>TH</sup> day of May, 2012.

---

E. WARD KOESER, President  
Board of City Commissioners

---

JOHN KAUTZMAN  
City Auditor

## Comprehensive Legal description for Annexation

A parcel of land located in the SE $\frac{1}{4}$  of Section 9, Township 154 North, Range 101 West of the Fifth Principal Meridian, Williams County, North Dakota, more particularly described as follows: Beginning at a point 637.2 feet East of the south  $\frac{1}{4}$  corner of said Section 9; thence North 00°08' East parallel to the north-south  $\frac{1}{4}$  line of said Section 9 a distance of 794.4 feet to a point; thence North 89°53' East, parallel to the south line of said Section 9 a distance of 1006.8 feet to a point; thence South 00°08' West, parallel to said north-south line of Section 9, a distance of 794.4 feet to a point on the south line of said Section 9; thence South 89°53' West, along said south line of Section 9 a distance of 1006.8 feet to the point of beginning. Containing 18.35 acres, more or less, including road right-of-way.

Legal Descriptions for Annexation

A parcel of land located in the SE 1/4 of Section 9, Township 154 North, Range 101 West of the Fifth Principal Meridian, Williams County, North Dakota, more particularly described as follows: Beginning at a point 637.2 feet East of the south 1/4 corner of said Section 9; thence North 00°08' East parallel to the north-south 1/4 line of said Section 9 a distance of 794.4 feet to a point; thence North 89°53' East, parallel to the south line of said Section 9 a distance of 212.4 feet to a point; thence South 00°08' West, parallel to said north-south line of Section 9, a distance of 794.4 feet to a point on the south line of said Section 9; thence South 89°53' West, along said south line of Section 9 a distance of 212.4 feet to the point of beginning. Containing 3.87 acres, more or less, including road right-of-way.

AND  
 A parcel of land located in the SE 1/4 of Section 9, Township 154 North, Range 101 West of the Fifth Principal Meridian, Williams County, North Dakota, more particularly described as follows: Beginning at a point 849.6 feet East of the south 1/4 corner of said Section 9; thence North 00°08' East parallel to the north-south 1/4 line of the said Section 9, a distance of 794.4 feet to a point; thence North 89°53' East, parallel to the south line of Section 9 a distance of 212.4 feet to a point; thence South 00°08' West, parallel to said north-south 1/4 line of Section 9, a distance of 794.4 feet to a point on the south line of said Section 9; thence South 89°53' West, along said south line of Section 9 a distance of 212.4 feet to the point of beginning. Containing 3.87 acres more or less, including road right-of-way.

AND  
 A parcel of land located in the SE 1/4 of Section 9, Township 154 North, Range 101 West of the Fifth Principal Meridian, Williams County, North Dakota, more particularly described as follows: Beginning at a point 1062.0 feet East of the South 1/4 Corner of said Section 9; thence North 00 degrees 08 minutes East parallel to the north-south 1/4 line of said Section 9, a distance of 794.4 feet to a point; thence North 89 degrees 53 minutes East, parallel to the south line of said Section 9 a distance of 582.0 feet to a point; thence South 00 degrees 08 minutes West, parallel to said north-south 1/4 line of Section 9, a distance of 794.4 feet to a point on the south line of said Section 9; thence South 89 degrees 53 minutes West, along said south line of Section 9 a distance of 582.0 feet to the point of beginning. Containing 10.61 acres more or less, including road right-of-way.

Comprehensive Legal description for Annexation

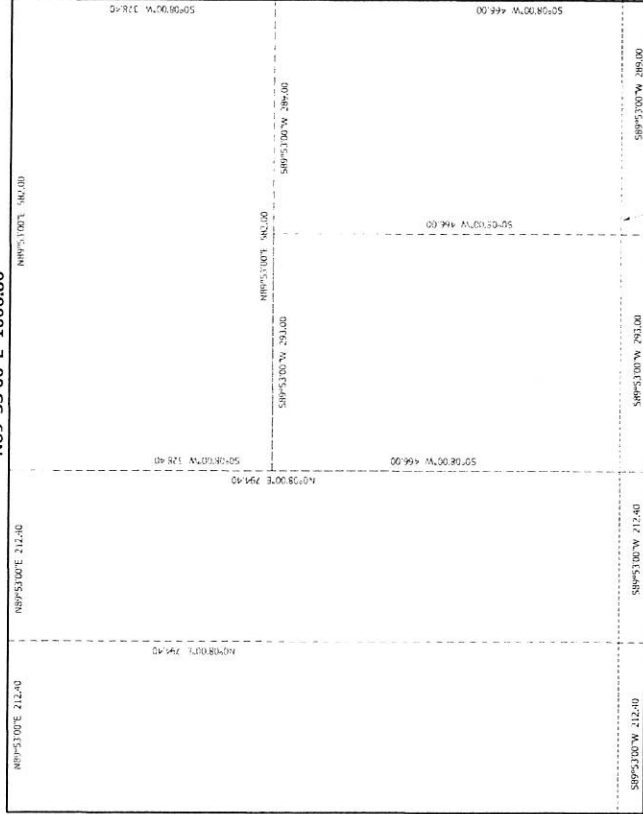
A parcel of land located in the SE 1/4 of Section 9, Township 154 North, Range 101 West of the Fifth Principal Meridian, Williams County, North Dakota, more particularly described as follows: Beginning at a point 637.2 feet East of the south 1/4 corner of said Section 9; thence North 00°08' East parallel to the north-south 1/4 line of said Section 9 a distance of 794.4 feet to a point; thence North 89°53' East, parallel to the south line of said Section 9 a distance of 1006.8 feet to a point; thence South 00°08' West, parallel to said north-south line of Section 9, a distance of 794.4 feet to a point on the south line of said Section 9; thence South 89°53' West, along said south line of Section 9 a distance of 1006.8 feet to the point of beginning. Containing 18.35 acres, more or less, including road right-of-way.

# SURVEY SKETCH

MAY 2012

Seal of  
 R101

N89°53'00"E 1006.80



S0°08'00"W 794.40

HARVEST HILLS DR  
 S0°08'00"W 794.40

South 1/4 Corner of Section 9  
 T154 R101

26th ST W  
 S89°53'00"W 637.20

26th ST W  
 S89°53'00"W 1006.80

EXISTING 66' WIDE COUNTY ROAD EASEMENT  
 NCCC 24-07-03

