

RESOLUTION NO. 12-32

Commissioner Bogar introduced the following Resolution and moved its adoption:

RESOLUTION CREATING **WATER, SEWER AND STREET IMPROVEMENT DISTRICT 12-5** OF THE CITY OF WILLISTON, NORTH DAKOTA.

BE IT RESOLVED BY THE BOARD OF CITY COMMISSIONERS OF THE CITY OF WILLISTON, NORTH DAKOTA:

There is hereby created a Water, Sewer and Street Improvement District in the City of Williston, to be designated and known as **WATER, SEWER AND STREET IMPROVEMENT DISTRICT 12-5** created for the purpose constructing the following:

The construction of a new water and sewer system within the boundaries of Water, Sewer and Street Improvement District 12-5 and a new street along the Bean Drive right of way to be platted in the proposed Tofte--Bean Subdivision.

That said **WATER, SEWER AND STREET IMPROVEMENT DISTRICT 12-5** shall contain and involve the following described real property situated in the City of Williston, Williams County, North Dakota, described as follows:

The proposed Tofte Bean Subdivision of the City of Williston; the Cook Subdivision of the City of Williston; and the property lying between the north right of way line of East Broadway and the proposed Tofte Bean Subdivision running from the east right of way line of East Dakota Parkway to the Cook Subdivision.


As shown on the attached map.

The motion for the adoption of the foregoing Resolution was duly seconded by Commissioner Klug, and upon vote being taken thereon, the following Commissioners voted "AYE": Bekkedahl, Bogar, Klug, Cymbaluk, Koeser and the following voted "NAY": None. Absent and not voting: None. Whereupon said motion was declared duly passed and adopted this **28th day of February, 2012.**

ATTEST:



John Kautzman, City Auditor



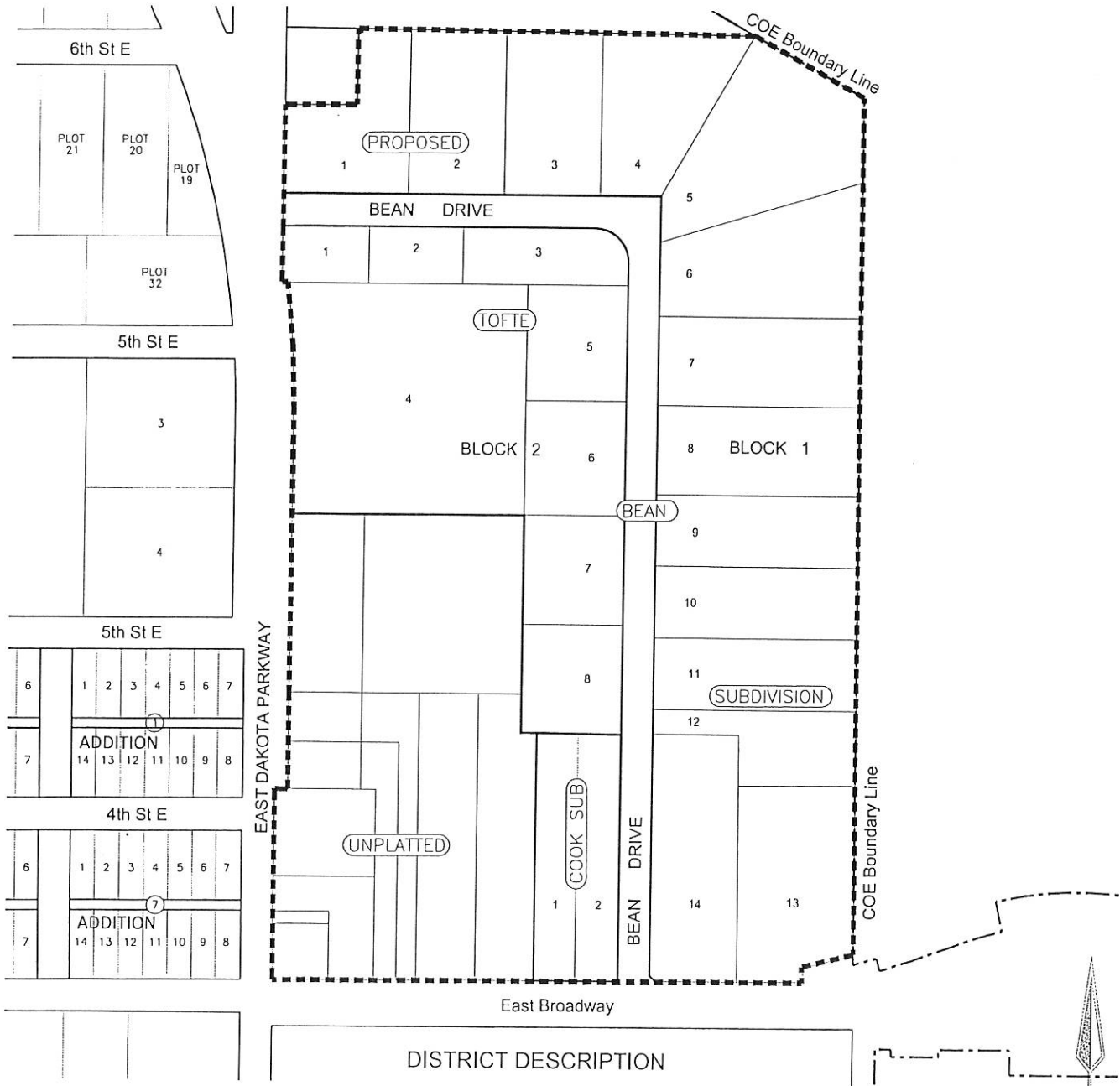
Board of City Commissioners
E. Ward Koeser, President

Publish: March 6th and March 13th, 2012

WATER, SEWER & STREET IMPROVEMENT DISTRICT 12-5

Tofte Bean Subdivision

Water, Sewer & Street Improvements



DISTRICT DESCRIPTION

The proposed Tofte Bean Subdivision of the City of Williston; the Cook Subdivision of the City of Williston; and the property lying between the north right of way line of East Broadway and the proposed Tofte Bean Subdivision running from the east right of way line of East Dakota Parkway to the Cook Subdivision.

- DISTRICT BOUNDARY
- . - . - . CITY LIMITS