

**RESOLUTION NO. 10-64**

Commissioner Klug introduced the following Resolution and moved its adoption:

RESOLUTION RECEIVING THE ENGINEER'S REPORT AS TO THE GENERAL NATURE, PURPOSE, AND FEASIBILITY OF THE PROPOSED IMPROVEMENT AND AN ESTIMATE AS TO THE PROBABLE COST OF WORK FOR **STREET AND STORM SEWER IMPROVEMENT DISTRICT 10-7**, AND APPROVING THE SAME.

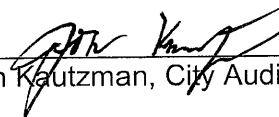
BE IT RESOLVED BY THE BOARD OF CITY COMMISSIONERS OF THE CITY OF WILLISTON, NORTH DAKOTA:


That the Engineering Report as the general nature, purpose, and feasibility of **STREET AND STORM SEWER IMPROVEMENT DISTRICT 10-7** and the estimate of the probable cost of such work hereby be approved and hereby ordered to be placed on file in the office of the City Auditor, where they shall remain on file subject to inspection by anyone interested herein.

The motion for the adoption of the foregoing Resolution was duly seconded by Commissioner Cymbaluk, and upon vote being taken thereon, the following Commissioners voted "AYE": Cymbaluk, Klug, Bogar and the following voted "NAY": None. Absent and not voting: Bekkedahl, Koeser. Whereupon said motion was declared duly passed and adopted this **28th day of December, 2010**.



ATTEST:

  
\_\_\_\_\_  
John Kautzman, City Auditor

  
\_\_\_\_\_  
Brent Bogar, Acting President  
Board of City Commissioners

**Engineering Report**  
**Street and Storm Sewer Improvement District 10-7**  
**23<sup>rd</sup> Street West and Creekside Drive**

**Williston, North Dakota**

## **Section I--Creekside Drive Street and Storm Sewer Improvements**

This project consists of installing storm sewer and street improvements on the undeveloped portion of Creekside Drive starting at Bison Drive to the existing pavement within Creekside Subdivision. Sanitary sewer and water mains with service line have been installed on Creekside Drive.

### **A. Storm Sewer**

The City of Williston existing storm sewer and drainage ditch crossing Creekside Subdivision, the storm sewer and drainage ditch is in an alignment with 16<sup>th</sup> St W and crossing under Creekside Drive. In grading Creekside Drive, the low point on Creekside Drive is adjacent to the existing drainage ditch and storm sewer. Storm sewer inlets will be installed on Creekside Drive and tied into the existing storm sewer and the curb & gutter grades at the existing drainage will be lowered to allow rainfall runoff to over flow Creekside Drive if the existing storm sewer cannot handle the rainfall runoff.

### **B. Street Improvements**

Street improvement will consist of grading, installing mountable curb & gutter at 34 ft back-back and placing hot bituminous mix. Based on Williston's transportation plan dated August, 2010 Creekside Drive is designated as a local street. The paving section for creekside Drive will consist of 6 inches of a gravel base and 3 inches of Class 29 hot bituminous mix.

The estimated cost of the proposed Section I street and storm sewer improvements to Creekside Drive is approximately \$450,000.

This cost would be assessed to the benefitted properties along Creekside Drive.

It has been the general policy of the City to assess street improvement costs on the front foot basis and storm sewer costs on the square foot basis. Because of the unconventional layout of the Creekside Ridge Subdivision and disparity of the sizes and the street frontage of the affected lots the Section I street and storm sewer improvement costs will be assessed on an Equivalent Lot basis. The two corner lots at the intersection of Creekside Drive and Bison Drive would be assessed as a half equivalent lot each.

## **Section II--23<sup>rd</sup> Street West Street and Storm Sewer Improvements**

This project consists of installing storm sewer and street improvements across Timbers Subdivision on 23<sup>rd</sup> street west. Under Williston District 10-5, sanitary sewer and water mains with service line were installed from 19<sup>th</sup> Ave W to Granite Peaks Subdivision.

### **A. Storm Sewer**

The City's existing 24" RCP storm sewer at the intersection of 19<sup>th</sup> Ave W and 23<sup>rd</sup> St W would be extended west along 23<sup>rd</sup> Street to 25<sup>th</sup> Avenue West. A 12" RCP storm sewer would be installed along 23<sup>rd</sup> Street from 25<sup>th</sup> Avenue West to an existing 12" RCP storm sewer that has been installed to the east line of the Granite Peaks Subdivision.

The estimated cost to install the 24" RCP storm sewer to 25<sup>th</sup> Avenue West is approximately \$115,000. This cost would be assessed to the properties within the The Timbers Subdivision on a square foot basis.

The estimated cost to extend the 12" RCP storm sewer from 25<sup>th</sup> Avenue West to the Granite Peaks Subdivision is approximately \$15,000. This cost would be assessed to the properties within the Granite Peaks Subdivision on a square foot basis.

### **B. Street Improvements**

Street improvement will consist of grading, installing mountable curb & gutter at 38 ft back-back and placing hot bituminous mix. Through an agreement with the City of Williston the developer of the Timbers Subdivision would transition from a standard curb & gutter section to a mountable curb & gutter section at the intersection of 19<sup>th</sup> Ave W and 23<sup>rd</sup> Street W. Based on Williston's transportation plan dated August, 2010 23<sup>rd</sup> Street West should be a collector street, which is wider than a local street. The City of Williston set the street width at 38 ft back to back. The paving section for 23<sup>rd</sup> St W will consist of 6 inches of a gravel base and 4 inches of Class 29 hot bituminous mix, which matches the pavement section on 19<sup>th</sup> Ave W.

The estimated cost to install the 23<sup>rd</sup> Street West improvements is approximately \$415,000. This cost would be assessed to the properties along 23<sup>rd</sup> Street West and within The Timbers Subdivision on a front foot basis.

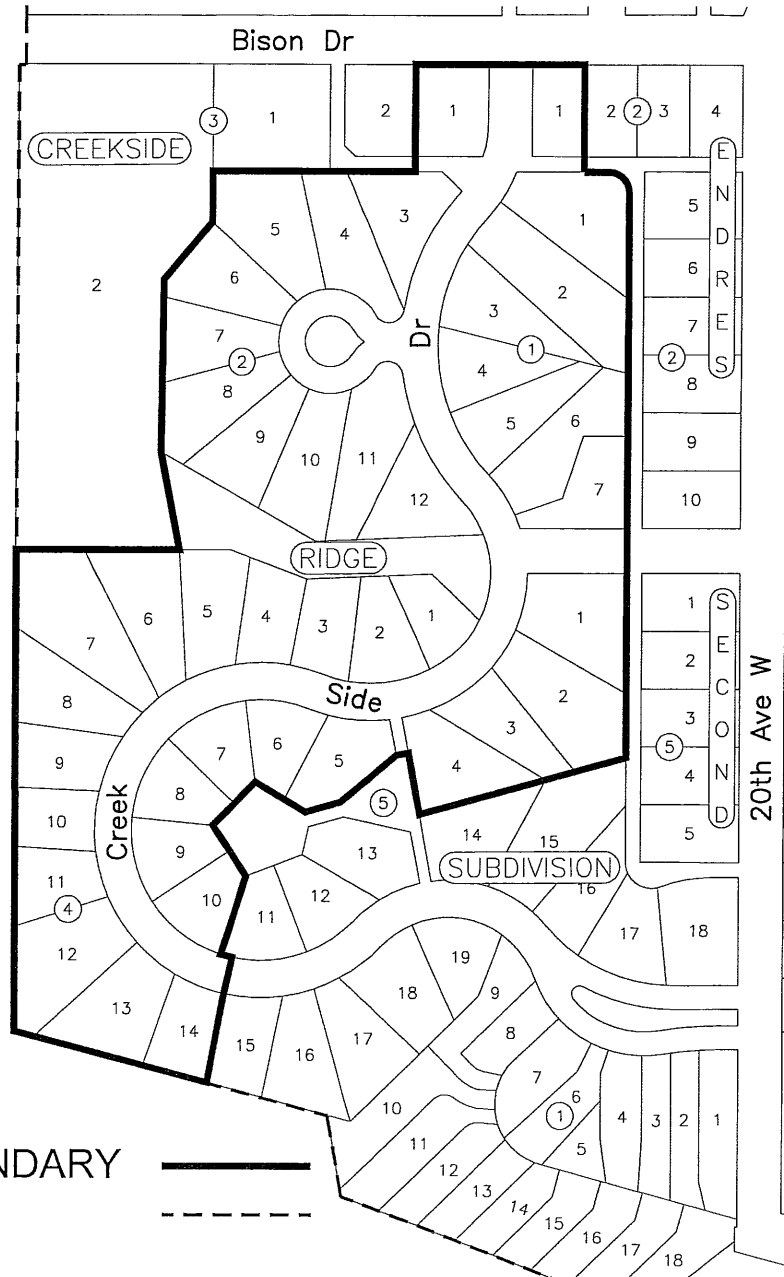
Detailed cost estimates and project location drawings are attached to this report.

Should you have any questions or need any additional information, please contact the City Engineer's Office at anytime.

Respectfully Submitted,

Monte C. Meiers, PE  
City Engineer

# STREET AND STORM SEWER IMPROVEMENT DISTRICT 10-7 SECTION I--CREEKSIDE DRIVE STREET IMPROVEMENTS

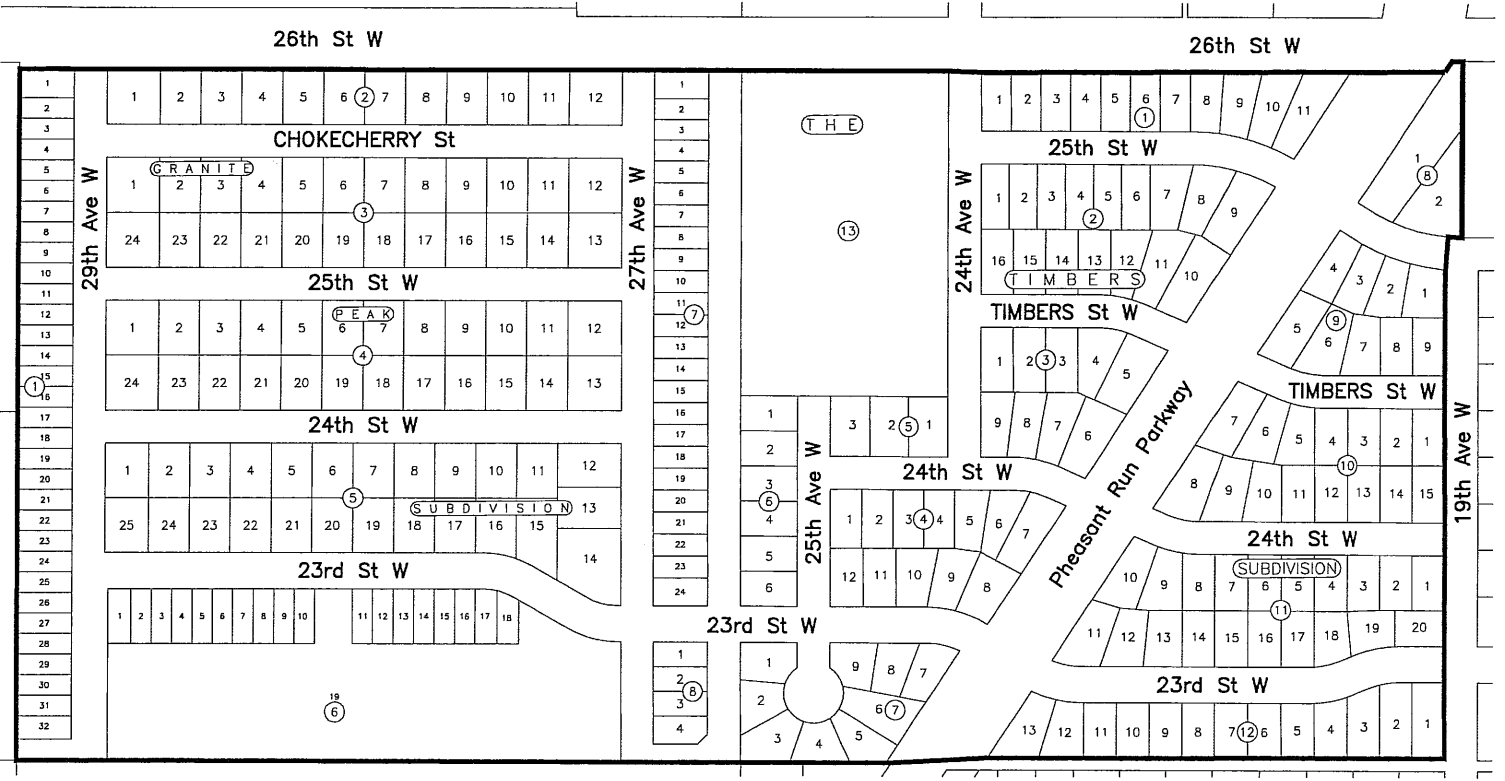


## DISTRICT DESCRIPTION

STREET & STORM SEWER IMPROVEMENT DISTRICT 10-7  
SECTION I--CREEKSIDE DRIVE STREET IMPROVEMENTS

All of Block One, Lot 1 and Lots 3 through 12 of Block Two, Lots 1 through 14 of Block Four, and Lots 1 through 10 of Block Five of the Creekside Ridge Subdivision and Lot 1 of Block Two of the Endres Second Addition of the City of Williston.

# STREET AND STORM SEWER IMPROVEMENT DISTRICT 10-7 SECTION II 23rd STREET & STORM SEWER IMPROVEMENTS



DISTRICT BOUNDARY

## DISTRICT DESCRIPTION STREET & STORM SEWER IMPROVEMENT DISTRICT 10-7 SECTION II--23rd STREET & STORM SEWER IMPROVEMENTS

All of the Granite Peak Subdivision and all of The Timbers Subdivision to the City of Williston.

**AMERITECH ENGINEERING CORPORATION**

**Street and Storm Sewer Improvement District 10-7  
Preliminary Cost Estimate**

PROJECT NAME: Section I--Creekside Drive Street and Storm Sewer Improvemnts  
 CLIENT: City of Williston  
 DATE PREPARED: November 19, 2010

PROJECT: # 10-115  
 PREPARED BY: Donald Loomer

SPEC. NO.	ITEM NO.	DESCRIPTION	QUAN.	UNIT	UNIT PRICE	TOTAL EST. COST
1100	1	General Conditions	1	L.S.	\$ 15,000.00	\$ 15,000.00
2100	2	Construction Traffic Control	1	L.S.	\$ 5,000.00	\$ 5,000.00
2230	3	Remove and Replace Topsoil	1	L.S.	\$ 7,000.00	\$ 7,000.00
2230	4	Erosion Control	1	L.S.	\$ 4,000.00	\$ 4,000.00
2300	5	Excavation / Embankment	1	L.S.	\$ 24,000.00	\$ 24,000.00
2300	6	Subgrade Preparation	7770	S.Y.	\$ 2.00	\$ 15,540.00
2300	7	Aggregate Base (Class 5)	2265	Ton	\$ 18.00	\$ 40,770.00
2510	8	Adjust Existing Gate Valves	10	Ea.	\$ 200.00	\$ 2,000.00
2530	9	Adjust Existing Manholes	8	Ea	\$ 500.00	\$ 4,000.00
2630	10	Connect to Existing 36" RCP Storm Sewer	2	Ea.	\$ 1,000.00	\$ 2,000.00
2630	11	18" Storm Sewer (RCP, CL-III)	55	L.F.	\$ 35.00	\$ 1,925.00
2630	12	Inlet-Type I	2	Ea.	\$ 2,600.00	\$ 5,200.00
2741	13	Cl. 29 Hot Bituminous Paving	1010	Ton	\$ 65.00	\$ 65,650.00
2741	14	PG 58-34 Asphalt Cement	70	Ton	\$ 850.00	\$ 59,500.00
2751	15	Concrete Curb and Gutter	4165	L.F.	\$ 20.00	\$ 83,300.00
2751	16	Concrete Valley Gutter	22	S.Y.	\$ 90.00	\$ 1,980.00

Est. Construction	\$	336,865.00
Contingency 10%	\$	33,686.50
<b>Total Est. Construction costs</b>	<b>\$</b>	<b>370,551.50</b>
Admin.	\$	18,539.00
Material Testing	\$	-
A/E Costs, Design	\$	11,100.00
A/E Costs, Cons	\$	33,360.00
<b>Total Est. Project costs</b>	<b>\$</b>	<b>433,550.50</b>

The attached Engineer's opinion of the construction costs is only an opinion of the probable cost of construction and is supplied only as a guide. The Engineer does not guarantee the accuracy of such opinion to contractor's bids or actual cost of the project.



**AMERITECH ENGINEERING CORPORATION**

**Street and Storm Sewer Improvement District 10-7  
Preliminary Cost Estimate**

PROJECT NAME: Section II--23rd Street West Street and Storm Sewer Improvements

CLIENT: City of Williston

DATE PREPARED: November 19, 2010

PROJECT: # 10-115

PREPARED BY: Donald Loomer

**Street Improvements**

SPEC. NO.	ITEM NO.	DESCRIPTION	QUAN.	UNIT	UNIT PRICE	TOTAL EST. COST
1100	1	General Conditions	1	L.S.	\$ 11,250.00	\$ 11,250.00
2100	2	Construction Traffic Control	1	L.S.	\$ 3,750.00	\$ 3,750.00
2230	3	Remove and Replace Topsoil	1	L.S.	\$ 8,000.00	\$ 8,000.00
2230	4	Erosion Control	1	L.S.	\$ 2,000.00	\$ 2,000.00
2300	5	Excavation / Embankment	1	L.S.	\$ 24,000.00	\$ 24,000.00
2300	6	Subgrade Preparation	6070	S.Y.	\$ 2.00	\$ 12,140.00
2300	7	Aggregate Base (Class 5)	1770	Ton	\$ 18.00	\$ 31,860.00
2510	8	Adjust Existing Gate Valve	6	Ea.	\$ 200.00	\$ 1,200.00
2510	9	Adjust Existing Manhole	13	Ea.	\$ 500.00	\$ 6,500.00
2741	10	Cl. 29 Hot Bituminous Paving	1210	Ton	\$ 65.00	\$ 78,650.00
2741	11	PG 58-34 Asphalt Cement	79.7	Ton	\$ 850.00	\$ 67,745.00
2751	12	Concrete Curb and Gutter	2400	L.F.	\$ 20.00	\$ 48,000.00
2751	13	Concrete Valley Gutter	45	S.Y.	\$ 90.00	\$ 4,050.00
2751	14	Concrete Radius Unit	8	Ea.	\$ 1,800.00	\$ 14,400.00
Est. Construction						\$ 313,545.00
Contingency 10%						\$ 31,354.50
<b>Total Est. Construction costs</b>						<b>\$ 344,899.50</b>
Admin.						\$ 17,244.98
Material Testing						\$ -
A/E Costs, Design						\$ 20,250.00
A/E Costs, Cons						\$ 30,375.00
<b>Total Est. Project costs</b>						<b>\$ 412,769.48</b>

**Storm Sewer Improvements--19th Ave W to 25th Ave W**

SPEC. NO.	ITEM NO.	DESCRIPTION	QUAN.	UNIT	UNIT PRICE	TOTAL EST. COST
1100	1	General Conditions	1	L.S.	\$ 3,000.00	\$ 3,000.00
2100	2	Construction Traffic Control	1	L.S.	\$ 1,000.00	\$ 1,000.00
2630	3	Connect to Existing 24" RCP Storm Sewer	1	Ea.	\$ 1,000.00	\$ 1,000.00
2630	4	18" Storm Sewer (RCP, CL-III)	65	L.F.	\$ 35.00	\$ 2,275.00
2630	5	24" Storm Sewer (RCP, CL-III)	1110	L.F.	\$ 44.00	\$ 48,840.00
2630	6	Inlet-Type I	2	Ea.	\$ 2,600.00	\$ 5,200.00
2630	7	48" Manhole, Storm	5	Ea.	\$ 4,400.00	\$ 22,000.00
2630	8	54" Manhole, Storm	1	Ea.	\$ 5,500.00	\$ 5,500.00
Est. Construction						\$ 88,815.00
Contingency 10%						\$ 8,881.50
<b>Total Est. Construction costs</b>						<b>\$ 97,696.50</b>
Admin.						\$ 4,884.83
Material Testing						\$ -
A/E Costs, Design						\$ 5,400.00
A/E Costs, Cons						\$ 8,100.00
<b>Total Est. Project costs</b>						<b>\$ 116,081.33</b>

**Storm Sewer Improvements--25th Ave W to Granite Peaks Subdivision**

SPEC. NO.	ITEM NO.	DESCRIPTION	QUAN.	UNIT	UNIT PRICE	TOTAL EST. COST
1100	1	General Conditions	1	L.S.	\$ 750.00	\$ 750.00
2100	2	Construction Traffic Control	1	L.S.	\$ 250.00	\$ 250.00
2630	3	Connect to Existing 12" RCP Storm Sewer	1	Ea.	\$ 1,000.00	\$ 1,000.00
2630	4	12" Storm Sewer (RCP, CL III)	135	L.F.	\$ 30.00	\$ 4,050.00
2630	5	48" Manhole, Storm	1	Ea.	\$ 4,400.00	\$ 4,400.00

Est. Construction	\$ 10,450.00
Contingency 10%	\$ 1,045.00
<b>Total Est. Construction costs</b>	<b>\$ 11,495.00</b>
Admin.	\$ 574.75
Material Testing	\$ -
A/E Costs, Design	\$ 1,350.00
A/E Costs, Cons	\$ 2,025.00
<b>Total Est. Project costs</b>	<b>\$ 15,444.75</b>

The attached Engineer's opinion of the construction costs is only an opinion of the probable cost of construction and is supplied only as a guide. The Engineer does not guarantee the accuracy of such opinion to contractor's bids or actual cost of the project.