

RESOLUTION NO. 09-47

Commissioner Bekkedahl introduced the following Resolution and moved its adoption:

RESOLUTION APPROVING DETAILED PLANS AND SPECIFICATIONS FOR CONSTRUCTION OF WATER, SEWER, STORM SEWER, STREET AND ALLEY IMPROVEMENT DISTRICT 09-5 SECTION VI.

BE IT RESOLVED BY THE BOARD OF CITY COMMISSIONERS OF THE CITY OF WILLISTON, NORTH DAKOTA:

That the detailed plans and specifications for construction of the improvement project consisting of Water and Sewer Improvements in:

Section VI: Lots 6, 7, 8, 9 & 10 of Block One of the Coyote Crossing First Addition.

which have been designated as **WATER, SEWER, STORM SEWER, STREET AND ALLEY IMPROVEMENT DISTRICT 09-5 SECTION VI**, is approved as presented by the Engineer to the Board of City Commissioners.

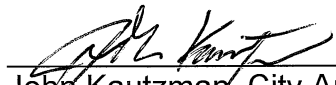
That a copy of the plans, specifications, and estimates which have been prepared for such improvements be placed on file in the City Engineer's office.

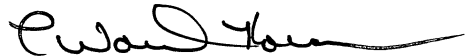
That the plans, specifications, and estimates shall be the property of the City and shall be filed in the office of the City Auditor and shall remain on file in his office subject to inspection by anyone interested therein.

The motion for the adoption of the foregoing Resolution was duly seconded by Commissioner Bogar, and upon vote being taken thereon, the following Commissioners voted "AYE": Bekkedahl, Klug, Lawson, Bogar and Koeser, and the following voted "NAY": None. Absent and not voting: None. Whereupon said motion was declared duly passed and adopted this 28th day of April, 2009.

ATTEST:



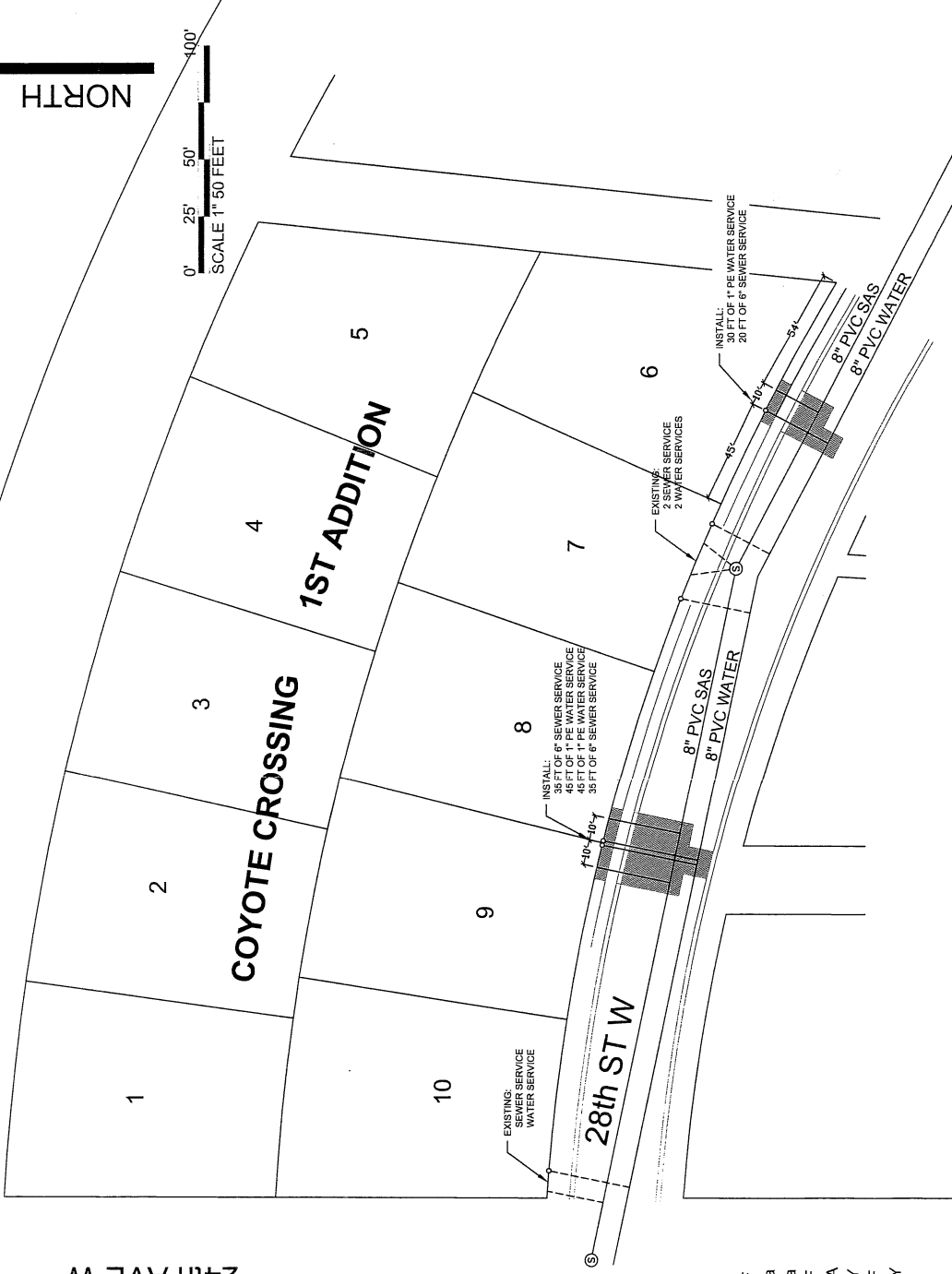

John Kautzman, City Auditor


E. Ward Koeser, President
Board of City Commissioners

WATER, SEWER, STORM SEWER, STREET & ALLEY IMP DIST 09-5
 SECTION VI--COYOTE CROSSING WATER & SEWER SERVICE LINES
 CHANGE ORDER #1

29th ST W

24th AVE W



ESTIMATE OF QUANTITIES:

| | |
|-------------------------|--------|
| 1" PE WATER SERVICE | 120 LF |
| 1" CURB STOP | 3 Ea |
| 8" x 1" SERVICE TAP | 3 Ea |
| 6" SDR 35 SEWER SERVICE | 90 LF |
| 8" X 6" SEWER WYES | 3 EA |
| ASPHALT PATCHING | 150 SY |
| C&G REPLACEMENT | 50 LF |
| 4" SIDEWALK REPLACEMENT | 35 SY |